

HAIR & HEAD WEAR

Appropriate hair and head wear is compulsory for all school sessions, and any journeys to and from the school site. This policy encourages pupils to identify with the school while promoting a positive, purposeful atmosphere during the working day.

PUPIL HEAD WEAR

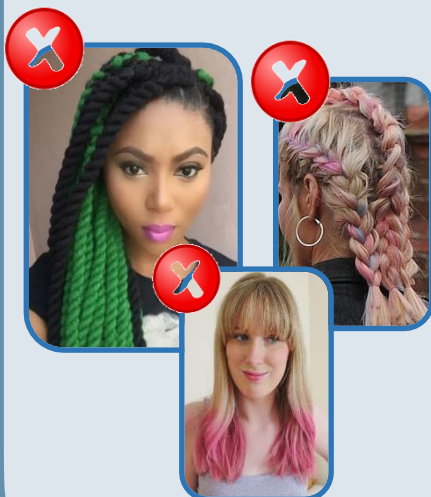
- Hats are not to be worn inside the school building. Hoodies are not to be worn inside the school building and hoods should be down at all times on the school site and to and from school.
- Hair bobbles / Alice bands / hair slides must be plain black or grey with no patterns or logos.
- Items of head wear for religious reasons must be plain black or grey with no patterns or logos. Pupils must ensure that their school tie is always visible.

PUPIL HAIR

- Pupils are to keep their hair at a suitable length and style for a professional workplace. When choosing a haircut, you must consider the following things: 1) Colour, 2) Cut, 3) Design.
- Hair styles should be tidy, clean and sensible / within the range of natural hair colours / no shorter than a grade 1 at the sides and back.
- For safety reasons, long hair should be tied back for practical lessons such as Art, PE, Science and Technology.
- The school will use its discretion for what is deemed extreme/inappropriate. In the event that a pupil's hair is deemed extreme/inappropriate, sanctions and a time frame for correction will be put into place.

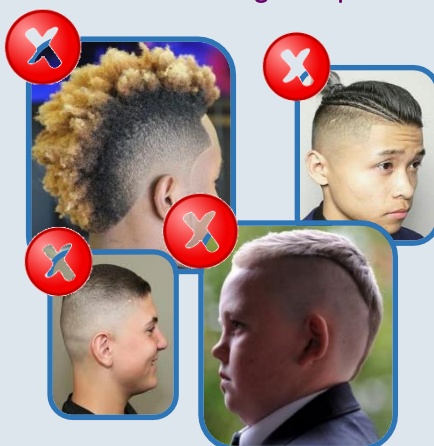
1. Colour

- No unnatural hair colours, tipped, or dip-dyed hair.
- Braids and extensions are to be natural hair colours only.



2. Cut

- Hair should be not shorter than a grade 1 all over.
- No extreme graduated or stepped haircuts e.g. hair which is shaved less than a grade 1 at the sides and long on top.



3. Design

- No lines or patterns are to be shaved into the hair or eyebrow.
- No extremes in sculpted or styled hair.



Woodlands School welcomes the variety of appearances brought by individual styles and choices, religious requirements regarding dress will be treated sensitively and will be agreed on an individual basis by the Head Teacher but must confirm to Health and Safety and Security Regulations. The wearing of e.g., saris, turbans, skullcaps, hijabs, kippahs, and clerical collars, arising from particular cultural/religious norms are seen as part of welcoming diversity.